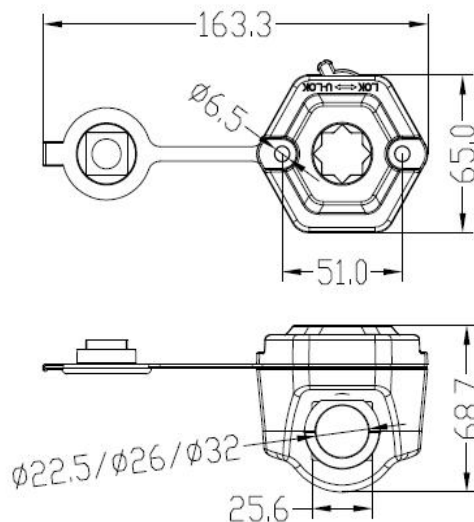
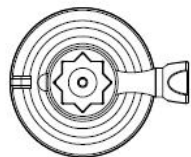
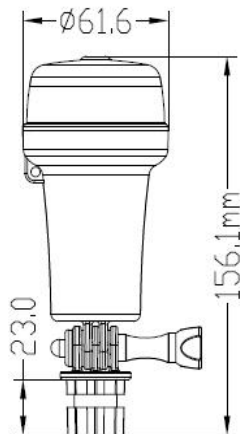


01101-SWRL/01102-SWRL	
Material	Housing:Made of ABS
Housing Colour	Black
LED Colour	01101-SWRL: Green+Red 01102-SWRL: Nature White
LED	01101-SWRL: 4PCS Green+4PCS Red 01102-SWRL: 8PCS White
Colour Temperature	<input type="checkbox"/> Warm White: K <input checked="" type="checkbox"/> Nature White: 4500 K
Features	1NM visibility/ Navigation Combination Light/For boats up to 12M Powered by three AA batteries (not included)
Working Voltage	DC4.5V
Wattage	Red/Green: 0.5W*4 White: 0.5W*8
Effective Lumen	Red:5Lumen Green:20Lumen White:190Lumen
water-proofing and dust-proofing	IP: 67
life TEST FOR LED LAMP(1000 hours)	Lumen Maintenance Percentage>90%
Operation Temperature	-20° ~ +45℃
Certificate	<div style="display: flex; justify-content: space-around; align-items: center;"> <div style="border: 1px solid black; padding: 2px;">UL</div> <div style="border: 1px solid black; padding: 2px;">CE</div> <div style="border: 1px solid black; padding: 2px;">RoHS</div> <div style="border: 1px solid black; padding: 2px;">TUV</div> </div> <div style="display: flex; justify-content: center; gap: 10px;"> </div>



PORTABLE NAVIGATION LIGHT

01101-SWRL/01102-SWRL

Features

1) This is a multifunction light:

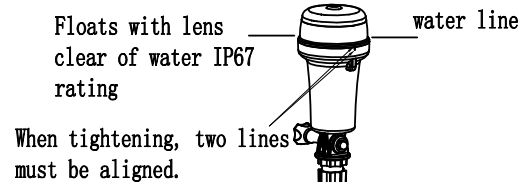
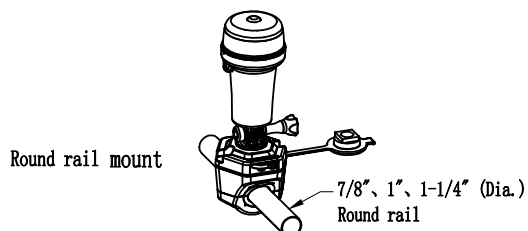
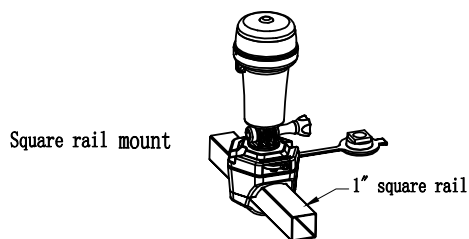
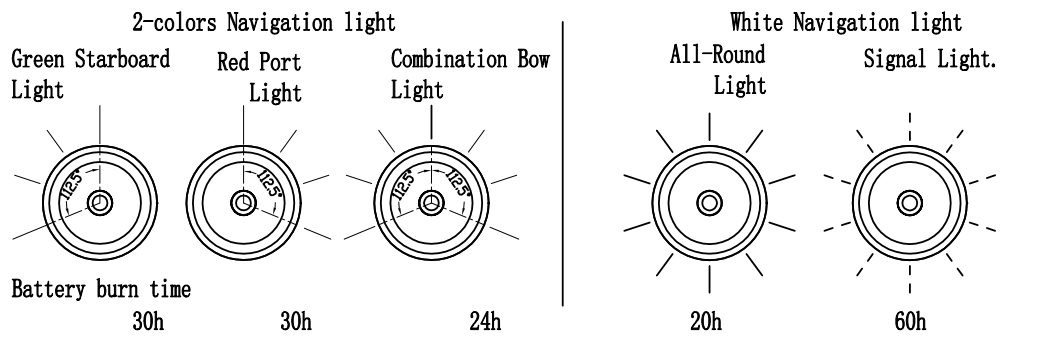
The 2-color navigation light has two colors (red + green) and three modes. It can be used as Green Starboard Light, Red Port Light or Combination Bow Light. The white navigation light can be used as All-Round Navigation Light or Signal Light. It has continuous bright and flash mode.

2) No wires required. Powered by three AA batteries (not included). The angle adjustable bracket .

3) Press and hold the blue button on cover for 2 seconds to turn on /off . Press it once to choose a Mode when the light is On.

4) The base can accommodate 1 "square tube, 7/8", 1 ", 1-1/4" round rail.

5) Before installing the batteries, please remove the flexible sleeve from the battery rack. After installing the batteries, reinstall the soft sleeve to ensure good contact when the battery is used in a vibrating environment.



installing the batteries